

# New MTF C Series

<b>DATE RELEASED</b>	28 November 2025
<b>REVISION</b>	V 2
<b>PRODUCT MANAGER</b>	Bernhard Hoffmann

# MTF C Series



# Index



Value Proposition	4
Target Customers	9
Features	11
Models & Accessories	21
Specifications	26
Competitors	35

# Value Proposition

# Value Proposition – General Information

**The current design of the actual MTF 3000 is over 40 years old and technically outdated.**

- Upgrading the lifting capacity to 3.200kg or 3.500kg is not feasible
- A complete product line is not available

**The new series of electro-mechanical lifts is “Made in Germany” in collaboration with *Consul*.**

These lifts are part of the Total Shop Solutions (TSS) offering and are distributed across Europe through the following brands: **John Bean**<sup>®</sup>, **Hofmann**<sup>®</sup>, & **Car-O-Liner**<sup>®</sup> (Snap-on Equipment serves as the manufacturer).

**The launch of this new series marks the return of Snap-on Equipment to the two-post lift market.**

This move brings us closer to offering a comprehensive range of lifts and is expected to positively influence sales of other related products.

**The lifts will be available in dark grey (RAL 7016).**

# Value Proposition – Market Data



Code	Category	Total 2023				Total	
<b>4.2</b>	<b>Two-post lifts</b>	<b>7766</b>	<b>1286</b>	<b>5055</b>	<b>3767</b>	<b>17874</b>	
4.2.1	Two-post lifts – Rated Load < 5t						
4.2.1.1	Electro-Mechanic	3722	908	1127	2000 est.	7757	43 %
4.2.1.2	Electro-Hydraulic	2912	269	3325	1767 est.	8273	57 %
4.2.2	Two-post lifts – Rated Load ≥ 5t						
4.2.2.1	Electro-Mechanic	481	54	104			
4.2.2.2	Electro-Hydraulic	651	55	499			
		Total 2024				Total	
<b>4.2</b>	<b>Two-post lifts</b>	<b>7592</b>	<b>1487</b>	<b>5038</b>	<b>n.a.</b>	<b>14117</b>	
4.2.1	Two-post lifts – Rated Load < 5t						
4.2.1.1	Electro-Mechanic	3822	1006	1086	n.a	5914	42 %
4.2.1.2	Electro-Hydraulic	2773	283	3418	n.a.	3161	58 %
4.2.2	Two-post lifts – Rated Load ≥ 5t						
4.2.2.1	Electro-Mechanic	282	155	105			
4.2.2.2	Electro-Hydraulic	715	43	429			

# Value Proposition – Product Portfolio

## MTF 3000C

Asymmetrical two-post lift with a lifting capacity of 3.000kg  
The high seller for **independent workshops**

## MTF 3500C

Asymmetrical two-post lift with a lifting capacity of 3.500kg  
Ideal for **car dealerships & electric vehicles (EVs)**

## MTF 4000C

Asymmetrical two-post lift with a lifting capacity of 4.000kg  
Suitable for lifting **cars, SUVs, and Vans**



# Value Proposition – MTF C Series Overview

The three models in the MTF C family share an identical look and feel and utilise many common components. This significantly simplifies servicing and maintenance.

The **main differences** between the models lie in the **columns and arms**, which are tailored to meet varying lifting capacities and vehicle types.



**MTF 3000C**

2 short arms 491-880mm  
2 long arms 830-1.340mm



**MTF 3500C**

4 long arms 670-1.314mm



**MTF 4000C**

4 long arms 722-1300mm

# Target Customers

# Target Customers

Type of Workshop	MTF 3000C	MTF 3500C	MTF 4000
Tyre Manufacturer-Owned Shops	Yellow	Green	Green
Independent Tyre Dealers	Yellow	Green	Green
Discount Retailers	Green	Yellow	Blue
Gas Stations	Green	Blue	Blue
Fast Fit Centers	Green	Green	Yellow
Car & Van Dealerships	Yellow	Green	Green
Independent Workshops	Green	Green	Green
Collision Repair Shops	Orange	Green	Yellow

Over featured

Good as primary unit, also offers features that surpass the standard usage and price expectations of our customers

Perfect fit

Perfect as main unit, price-to-performance ratio meets the standard needs of our customers

Moderate fit

Good, but some features may be absent depending on the shop's standards

Low fit

Model is typically unsuitable for this shop, may be well-suited for special applications or as a backup unit

# Features

# Features

## Columns

- The columns of the MTF C Series are made from specially rolled profiles, while competitors often use bent sheet metal
- The profile allows for a compact design
- The columns are protected by a rubber band
  - Shields against sparks or similar effects from welding or repair operations



## Carriage

- The MTF C Series features a carriage guided by six maintenance-free rollers
- These rollers ensure precise guidance within the columns and do not wear
- Competitors often use plastic sliding blocks, which can wear over time
- An integrated oil reservoir is included in the carriage
- Oil specification: CH 150



# Features

## Control Unit

- Operated via a reverse switch that can be locked with a standard padlock to prevent misuse
- Lifting and lowering occur with a slight delay after activation
  - Enhances the reliability of internal relays and PCBs



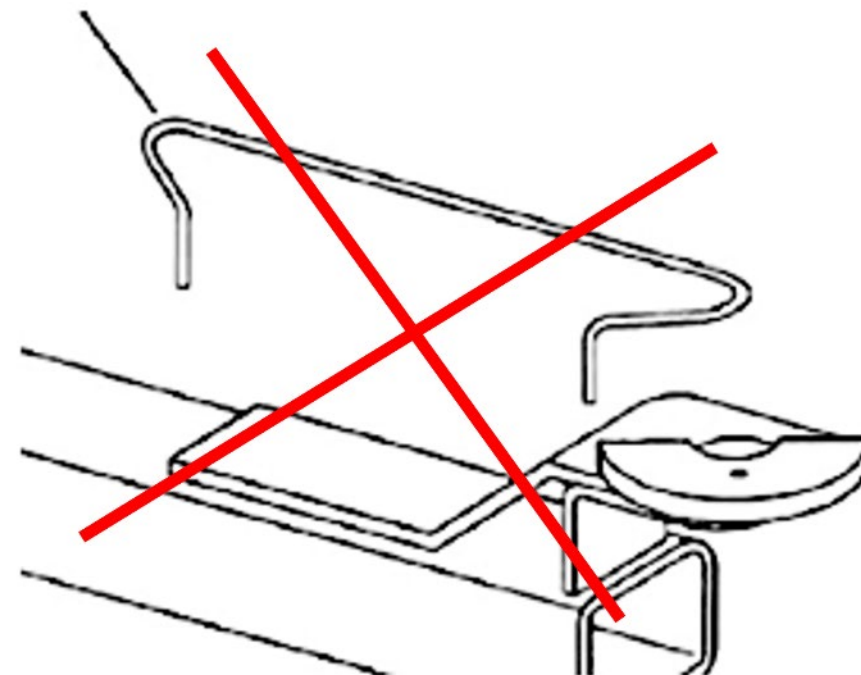
## Load / Safety Nut

- The MTF C Series uses a bronze load nut
- Competitors typically use nylon safety nuts, which are prone to wear



# Features – CE Stop

- The duolift® MTF C Series includes a CE Stop instead of mechanical foot protectors for optimal safety
- Mechanical foot protectors are often damaged shortly after installation
  - Increases risk of injury
  - Reduces usable drive-through width
- The CE Stop, commonly used in runway lifts (e.g. scissor or four-post lifts), automatically stops the carriage 200mm above the floor
  - Releasing the reverse switch and setting it to down again allows full lowering, accompanied by an audible beep

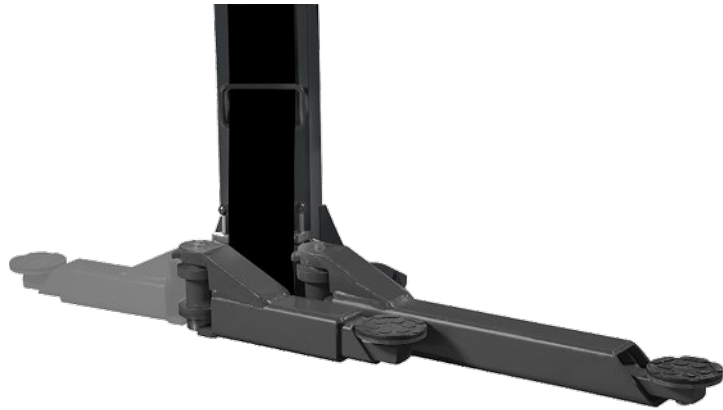


# Features – Lifting Arms

## MTF 3000C

Two short arms with three stages: 491–880mm

Two long arms with two stages: 830–1.340mm



## MTF 3500C & MTF 4000C

Four long arms with three stages

MTF 3500C: 670–1.314mm

MTF 4000C: 722–1.300mm



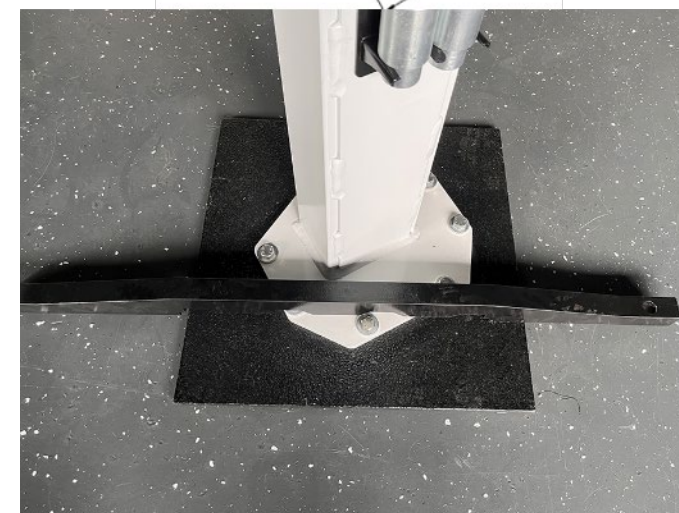
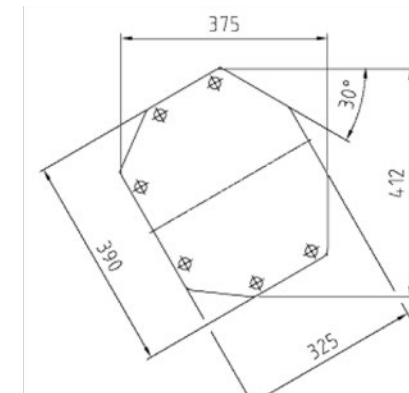
# Features – Overhead Cable Bridge

- Hosts the:
  - Power supply cable
  - Motor synchronisation cable
  - Thermo switch cable
- Adjustable height to suit workshop requirements and vehicle types
- Maximum total height: 4.100mm



# Features – Foundation Requirements

- Can be installed on floors with concrete rated at minimum C 20/25
- Minimum concrete thickness: 200mm
- Anchors are **not** included; HILTI chemical anchors are recommended  
**(See next page for details)**
- For floors with 150mm thickness, a base plate bar kit is available as an accessory



# Features – Anchor Requirements

## MTF 3000C & MTF 3500C

- 12 × Anchor M12 × 110/88mm
- Type: HAS-U 5.8 – M12 × 220
- 12 × Composite anchor cartridge HVU2 12 × 110mm
- 12 × Washer A13 DIN 9021-ST galvanized

## MTF 4000C

- 12 × Anchor M16 × 260mm
- Type: HAS-U 5.8 – M16 × 260/108
- 12 × Composite anchor cartridge HVU2 M16 × 125mm
- 12 × Washer 17 DIN 7349 galvanised



# Features – Packaging

- **Column height:** 2.550mm allowing compact packaging; saves space in trucks or containers
- **Packaging dimensions:** 2.800 × 800 × 700mm
- **Maximum truck load:** 36 lifts



# Features – Installation



The lifts are pre-synchronised in the factory, making installation straightforward. It can be carried out by a single technician with the assistance of a workshop employee.

## Installation steps:

1. Set up the columns.
2. Route the cables for power supply, potentiometer, and thermal switch from the auxiliary column through the overhead bridge.
3. Mount the overhead bridge.
4. Connect the cables to the control unit on the primary column.
5. Connect the main power supply.
6. Install the arms.
7. Perform a test.

**READY**

# Models & Accessories

# Models

Part Number	Product Name	List Price 2025	Recommended Street Price
HFC771246	MTF 3000C – 3-phase – RAL 7016	5.100 €	3.750 €
HFC771253	MTF 3500C – 3-phase – RAL 7016	6.500 €	4.600 €
HFC771261	MTF 4000C – 3-phase – RAL 7016	8.000 €	5.750 €



# Accessories

## ✓ Power Accessories

### Energy Unit with 2 × 230 V Plug

Quick connector for air and holder for impact wrench

**Part No.** EAK0339V10A

**List Price (June 2025):** 132 €



## ✓ Tool Storage

### Tool Trays

Clipped onto the arms, set of 4

**Part No.** HFC368357

**List Price (June 2025):** 140 €



### Holder for Pick-Up Pad Adaptors

Fixed with anchor nuts, set of 4

**Part No.** HCF375535

**List Price (June 2025):** 145 €



# Accessories

## ✓ Pick-Up Pad Extensions

**50mm high**

Set of 4

**Part No. HFC565937**

**List Price (June 2025): 320 €**



**100mm high**

Set of 4

**Part No. HFC565945**

**List Price (June 2025): 365 €**



**150mm high**

Set of 4

**Part No. HFC565952**

**List Price (June 2025): 390 €**



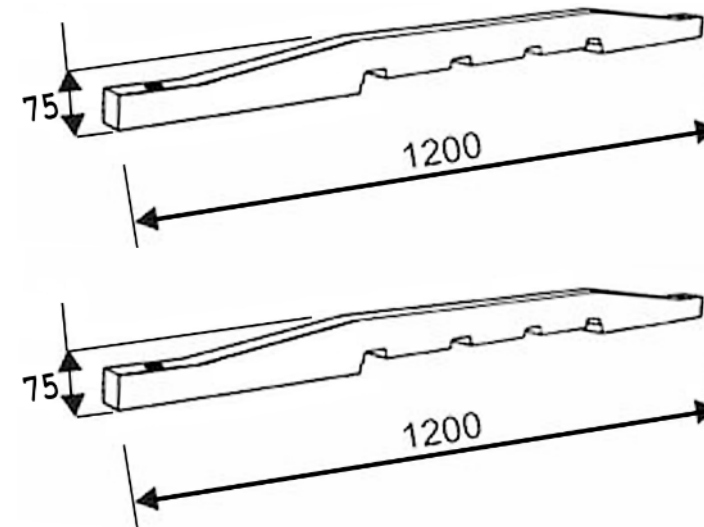
## ✓ Installation Accessories

**Base Plate Fixing Bars**

Set of 2 – for concrete thickness 150–210mm

**Part No. HFC370965**

**List Price (June 2025): 410 €**



# Accessories

## ✓ Vehicle-Specific Pick-Ups

### Ford Transit – 50mm high

Set of 4 **Part No.** HFC520601

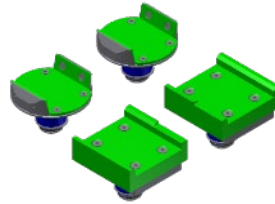
**List Price (June 2025):** 2.175 €



### VW Amarok – 100mm high

Set of 4 **Part No.** HFC520122

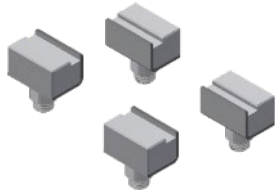
**List Price (June 2025):** 2.330 €



### VW ID.4 – 150mm high

Set of 4 **Part No.** HFC729640

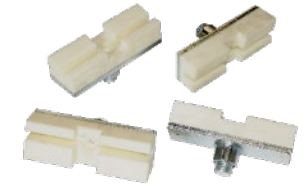
**List Price (June 2025):** 2.160 €



### Off-Road MB (no running boards) – 100mm high

Set of 4 **Part No.** HFC567941

**List Price (June 2025):** 2.145 €



### Crafter & Sprinter – 100mm high

Set of 4 **Part No.** HFC520114

**List Price (June 2025):** 1.880 €

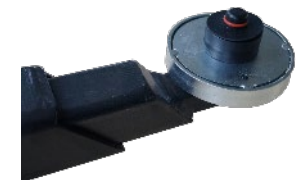


### Tesla Vehicles

Also compatible with third-party jacking pad systems, up to Ø130mm incl. third-party components

**Part No.** HFC705731

**List Price (June 2025):** 355 €



# Specifications

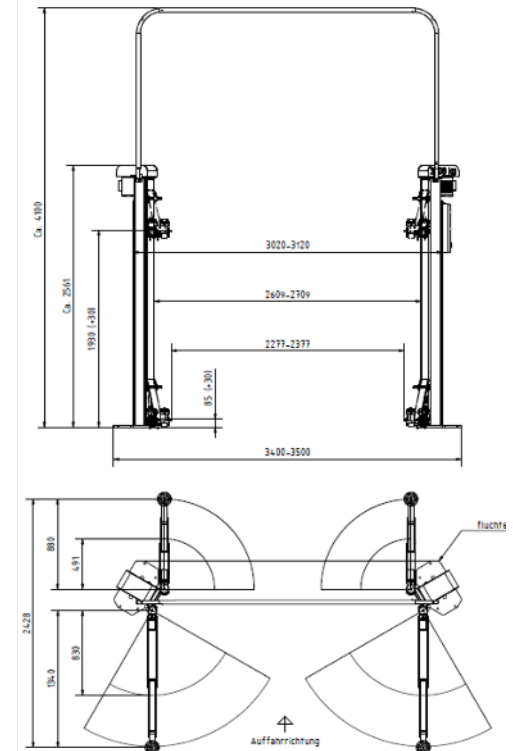
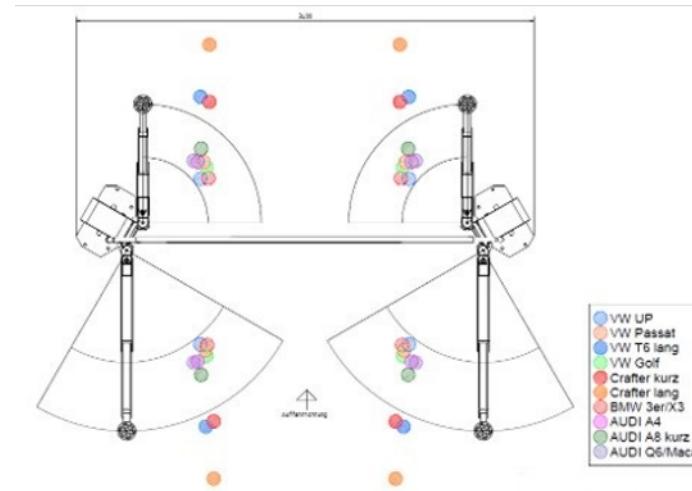
# MTF 3000C – Overview

- **Lifting capacity** 3.000kg
- **Processor-controlled levelling system**, electronically synchronised
- **Cable routing** via overhead tube (*not shown in image*)
- **Columns** made from specially rolled profiles
- **Columns rotated by 30°** for improved door clearance
- **Short swivel arms** movable from both sides
- **Arms can be parked in parallel**
- **Bronze alloy load nut** and **cast alloy safety nut**
- **Carriage fitted with six maintenance-free roller bearings**
- **Safety signal tone (CE Stop)** when lowering in the foot area
- **Colour** Dark grey (RAL 7016)



# MTF 3000C – Technical Data

- **Lifting Capacity:** 3.000kg
- **Lifting height:** 1.960mm
- **Lowest lifting point:** 85mm
- **Lifting time:** 50sec
- **Lowering time:** 50sec
- **Total width:** 3.400–3.500mm
- **Maximum total height:** 2.561mm (4.100mm w/extension)
- **Drive-through width:** 2.277–2.377mm
- **Long arm extension:** 830–1.340mm
  - **Number of stages:** 2
- **Short arm extension:** 491–880mm
  - **Number of stages:** 3
- **Arm safety device:** CE Stop
- **Motor power:** 2,5kW
- **Power supply:** 400V / 50Hz / 16A fuse



# MTF 3500C – Overview

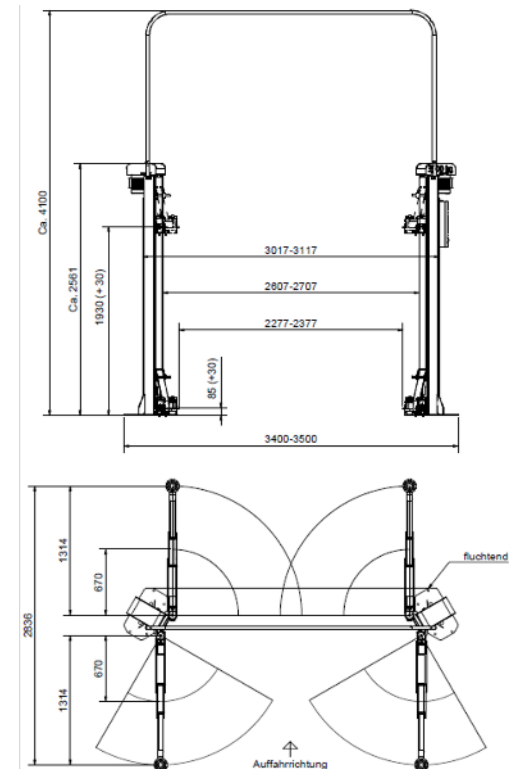
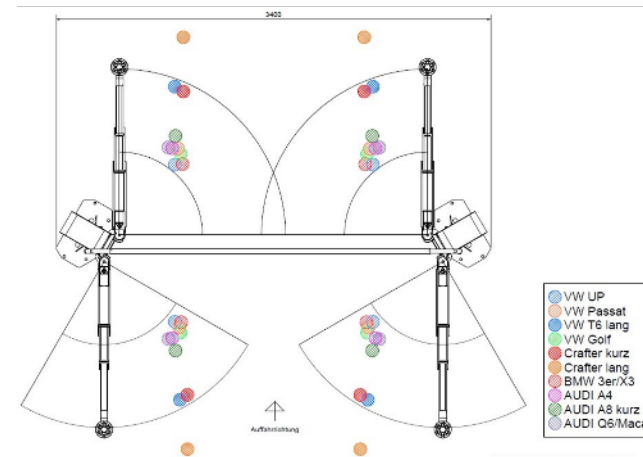
- **Lifting capacity** 3.500kg
- **Processor-controlled levelling system**, electronically synchronised
- **Cable routing** via overhead tube (*not shown in image*)
- **Columns** made from specially rolled profiles
- **Columns rotated by 30°** for improved door clearance
- **Bronze alloy load nut** and **cast alloy safety nut**
- **Carriage fitted with six maintenance-free roller bearings**
- **Safety signal tone (CE Stop)** when lowering in the foot area
- **Arms can be parked in parallel**
- **Capable of lifting vehicles from SMART to long transporters** (e.g. VW T6)
- **Colour** Dark grey (RAL 7016)



Overhead cable bridge not shown in picture.

# MTF 3500C – Technical Data

- **Lifting capacity:** 3.500kg
- **Lifting height:** 1.960mm
- **Lowest lifting point:** 85mm
- **Lifting time:** 35sec
- **Lowering time:** 35sec
- **Total width:** 3.400–3.500mm
- **Maximum total height:** 2.561mm (4.100mm w/extension)
- **Drive-through width:** 2.277–2.377mm
- **Long arm extension:** 670–1.314mm
  - **Number of stages:** 3
- **Short arm extension:** 670–1.314mm
  - **Number of stages:** 3
- **Arm safety device:** CE Stop
- **Motor power:** 3kW
- **Power supply:** 400V / 50Hz / 20A fuse



# MTF 4000C – Overview

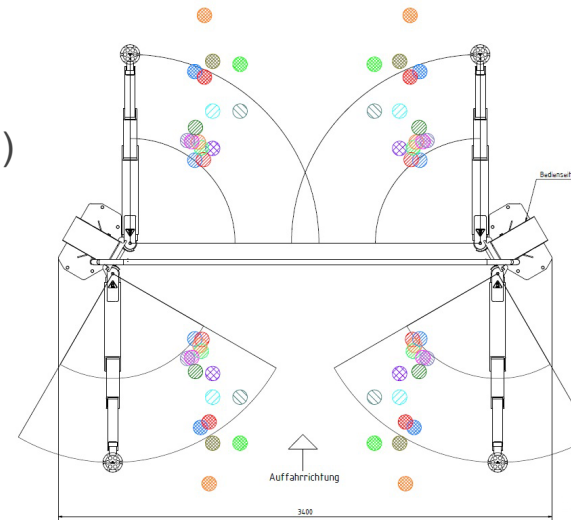
- **Lifting capacity** 4.000kg
- **Processor-controlled levelling system**, electronically synchronised
- **Cable routing** via overhead tube (*not shown in image*)
- **Columns** made from specially rolled profiles
- **Columns rotated by 30°** for improved door clearance
- **Bronze alloy load nut** and **cast alloy safety nut**
- **Carriage** fitted with **six maintenance-free roller bearings**
- **Safety signal tone (CE Stop)** when lowering in the foot area
- **Arms can be parked in parallel**
- **Capable of lifting vehicles from small cars (e.g. VW Up) to short vans**
- **Colour** Dark grey (RAL 7016)



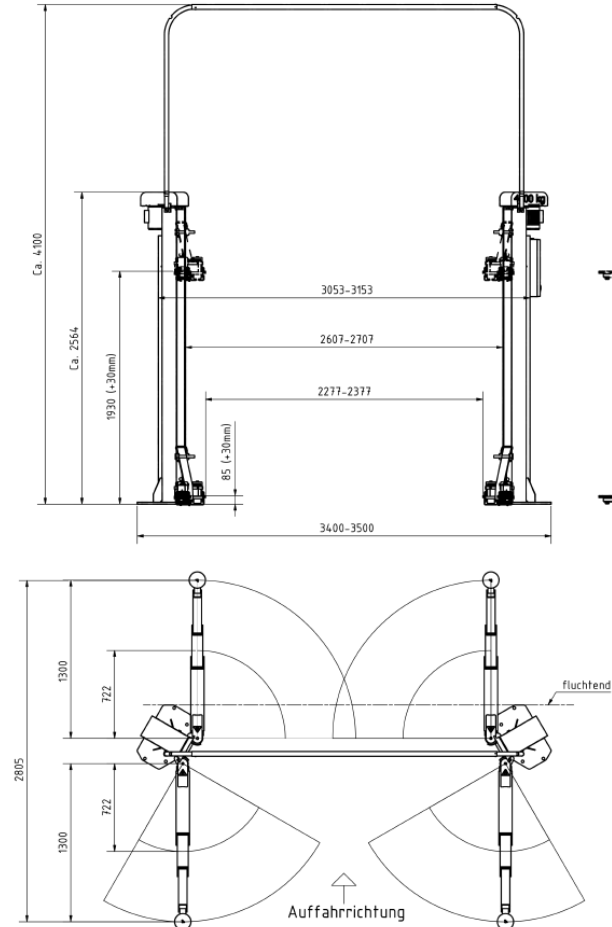
Overhead cable bridge not shown in picture.

# MTF 4000C – Technical Data

- Lifting capacity: 4.000kg
- Lifting height: 1.960mm
- Lowest lifting point: 85mm
- Lifting time: 35sec
- Lowering time: 35sec
- Total width: 3.400–3.500mm
- Maximum total height: 2.561mm (4.100mm w/extension)
- Drive-through width: 2.277–2.377mm
- Long arm extension: 670–1.314mm
- Number of stages: 3
- Short arm extension: 670–1.314mm
- Number of stages: 3
- Arm safety device: CE Stop
- Motor power: 3kW
- Power supply: 400V / 50Hz / 20A fuse



- VW UP
- VW Passat
- VW T6 lang
- VW Golf
- Crafter kurz
- Crafter lang
- BMW 3er/X3
- AUDI A4
- AUDI A8 kurz
- AUDI Q6/Macan
- Sprinter STANDARD
- Sprinter COMPACT T1
- Sprinter COMPACT T2
- Sprinter LONG T1
- Sprinter LONG T2



# MTF C Series – Technical Data Summary

	MTF 3000C	MTF 3500C	MTF 4000C
Packing dimensions [cm]	280 x 80 x 70	280 x 80 x 70	280 x 80 x 70
Net weight [kg]	600	650	750
Load capacity [kg]	3000	3500	4000
Load distribution	3:2 and 2:3	3:2 and 2:3	3:1
Short arm extension [mm]	491–880	670–1.314	722–1.300
Long arm extension [mm]	830–1.340	670–1.314	722–1.300
Installation width [mm]	3.400–3.500		
Height without cable bridge [mm]	2.561		
Height with cable bridge [mm]	4.100		
Drive Through width [mm]	2.277–2.377		
Stroke [mm]	1.845		
Lifting height [mm]	1.930 (+30)		
Pick up height [mm]	85–115		
Lowering time [s]	40		
Lifting time under nominal load [s]	40		
Motor power [kW]	2 x 2,5		
Power Supply Voltage [V]	400		
Duty cycle [%]	S3–10		
Current consumption [A]	16		
Fuse protection [A gl slow]	20		
Sound pressure level [dB (A)]	78		
Ambient temperature [°C]	Up to 40		
Relative humidity [%]	Up to 50 (at 40 °C). At lower temperatures, a higher humidity is permissible (e.g. 90 (at 20°C)). Prevent the formation of condensate.		

# Product portfolio 2-post lifts

## Electro-Mechanical



## Hydraulic



Independent Workshop

**MTF 3000 C**

Car Dealership EVs

**MTF 3500 C**  
**HL 3500**

Transporter / Vans Tire Service

**MTF 4000 C**

Transporter / Vans Tire Service

**HL 4500**

Vans

**HL 5500**

# Main Competitors

# MTF 3000C – Comparison of Technical Specifications by Competitor



	Hofmann	Nussbaum	Ravaglioli	OMCN	CORGHI	Stenhoj
	MTF 3000C	Smart Lift 2.30 SL DT	KPX32P	Megalift 199/GK	ERCO 3222N CEL	Maestro 32
Capacity (kg)	3.000	3.000	3.200	3.200	3.200	3.200
Lifting height (mm)	1.960	1.983	2.000	1.940	1.925	1.995
Lowest lifting point (mm)	85	95	96	90	85	95
Lifting time (sec)	50	40	42			40
Lowering time (sec)	50	40	42			40
Total width (mm)	3.400 – 3.500	3.000 - 3.100	3.250 – 3.350	3.210	3.570	3-120 – 3.320
Max total height (mm)	2.561 (4.100)	2.887	4.052	4.250	2.858	4.350
Drive through width (mm)	2.277 – 2.377	2.210 - 2.310	2.600 – 2.700		2.480	2.110 – 2.310
Long arm extraction (mm)	830 - 1.340	940 - 1.495	805 - 1.200	900 - 1.320	850 - 1.250	900 – 1.425
Number of stages	2	2	2	2	2	1
Short arm extraction (mm)	491 – 880	480 - 870	555 - 1.100	520 - 830	640 - 940	540 – 850
No of stages	3	3	3	3	3	2
Safety device for arms	CE Stop	CE Stop	CE Stop	Toe Guard	Toe Guard	
Carriage guidance	6 Rollers	Sliding blocks	Sliding blocks	Sliding blocks	Sliding blocks	
Motor power (KW)	2,5	1,5	2,6	2,0	3,6	2,8
Power supply voltage (V/Hz/Fuse)	400/50/16	400/50/16	400/50/xx	400/50/xx	400/50/xx	400/50/16
Energy unit (230V / air)	Option	Option	YES	Option		Option

DISCLAIMER: Data concerning third party’s products and used for the above comparisons has been taken from the relevant third party’s official website and is provided “as is”. Whenever data is missing, it was not available on the relevant third-party website at the time this document was published. Snap-on does not, therefore, assume any liability for the inaccuracy or incompleteness of such data.

# MTF 3500C – Comparison of Technical Specifications by Competitor



	Hofmann	Nussbaum	Ravaglioli	OMCN	CORGHI	Stenhoj
	MTF 3500C	Smart Lift 2.35 SL DT	KPX35	Megalift 199/Gamma	ERCO 3222N CEL	Maestro 2.35
Capacity (kg)	3.500	3.500	3.500	3.500	3.200	3.500
Lifting height (mm)	1.960	2.010	2.020	1.940	1.870	1.900
Lowest lifting point (mm)	85	102	100	90	85	95
Lifting time (sec)	50	46	42			40
Lowering time (sec)	50	40				40
Total width (mm)	3.400 – 3.500	3.230	3.250 – 3.350	3.370	3.230	3.320
Max total height (mm)	2.561 (4.100)	3.715 – 4.115	4.052	4.250	3.840	4.250
Drive through width (mm)	2.277 – 2.377	2.398	2.372 – 2.472		2.480	2.290
Long arm extraction (mm)	670 - 1.314	940 - 1.495	922 - 1.460	950 - 1.530	850-1.250	900-1.425
Number of stages	3	3	2	2	2	1
Short arm extraction (mm)	670 - 1.314	570 - 1.160	564 - 1.160	600 - 1.100	600 - 940	600-1.220
No of stages	3	3	3	3	3	2
Safety device for arms	CE Stop	CE Stop	CE Stop	Toe Guard	Toe Guard	
Carriage guidance	6 Rollers	Sliding blocks	Sliding blocks	Sliding blocks	Sliding blocks	
Motor power (KW)	2,5	1,5	2,6	2,6	3,6	2,8
Power supply voltage (V/Hz/Fuse)	400/50/20	400/50/16	400/50/??	400/50/??	400/50/??	400/50/25
Energy unit (230V / air)	Option	Option	YES	Option	Option	Option

DISCLAIMER: Data concerning third party's products and used for the above comparisons has been taken from the relevant third party's official website and is provided "as is". Whenever data is missing, it was not available on the relevant third-party website at the time this document was published. Snap-on does not, therefore, assume any liability for the inaccuracy or incompleteness of such data.

# MTF 4000C – Comparison of Technical Specifications by Competitor



	Hofmann	Nussbaum	Ravaglioli	OMCN	CORGI
	MTF 4000C	Smart Lift 2.40 SL Universal	KPX42LIK	Megalift 199/Alfa	ERCO 4022 CEL
Capacity (kg)	4.000	4.000	4.200	4.000	4.000
Lifting height (mm)	1.960	2.060	2.042	1.980	1.880
Lowest lifting point (mm)	85	115	115	120	85
Lifting time (sec)	50	46	58		
Lowering time (sec)	50	40			
Total width (mm)	3.400 – 3.500	3.350	3.428 – 3.528	3.415	3.570
Max total height (mm)	2.564 (4.100)	3.685 - 4.085	4.000	5.000	4.540
Drive through width (mm)	2.277 – 2.377	2.514	2.404 – 2.504		
Long arm extraction (mm)	722 - 1.300	1.130 - 1.840	705 - 1.330	990 - 1.470	695 - 1.732
Number of stages	3	1	3	2	3
Short arm extraction (mm)	722 - 1.300	570 - 1.160	705 - 1.330	630 - 1.180	1.015 - 1.550
No of stages	3	2	3	3	3
Safety device for arms	CE Stop	CE Stop	CE Stop	Toe Guard	Toe Guard
Carriage guidance	6 Rollers	Sliding blocks	Sliding blocks	Sliding blocks	Sliding blocks
Motor power (KW)	2,5	1,5,	3,5	2,6	3,6
Power supply voltage (V/Hz/Fuse)	400/50/20	400/50/16	400/50/??	400/50/??	400/50/??
Energy unit (230V / air)	Option	Option	YES	Option	

DISCLAIMER: Data concerning third party's products and used for the above comparisons has been taken from the relevant third party's official website and is provided "as is". Whenever data is missing, it was not available on the relevant third-party website at the time this document was published. Snap-on does not, therefore, assume any liability for the inaccuracy or incompleteness of such data.

# TSS Family



The Snap-on® Total Shop Solutions family of brands brings together best-in-class automotive repair products from across the industry.

From wheel balancers, wheel aligners, repair information and diagnostics, to brake lathes, automotive lifts, and collision repair, Total Shop Solutions brands offer a unique breadth of solutions to outfit any shop from floor to ceiling.

*Snap-on*

*SUN*

*JohnBean*

*Mitchell1*

**BLACKHAWK**

**HOFMANN** 

**KJ KANSAS JACK**

**BOXER**®

**NEXIQ**  
TECHNOLOGIES

**CARTEC** 

**CL Challenger Lifts**

**PRO-CUT**  
BRAKE SOLUTIONS

**ECOTECHNICS**®

**CAR-O-LINER**®

 **JOSAM**®

**truckCam**™

auto✓HC®

 **DEALER-FX**