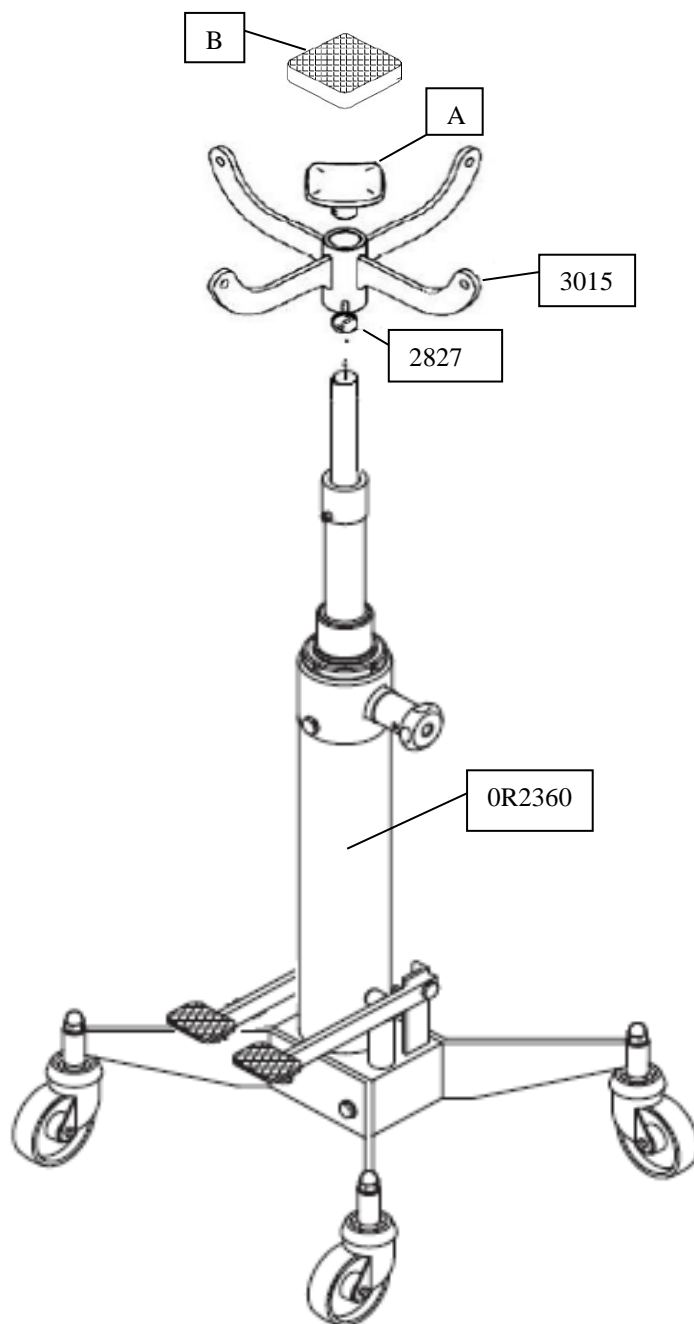


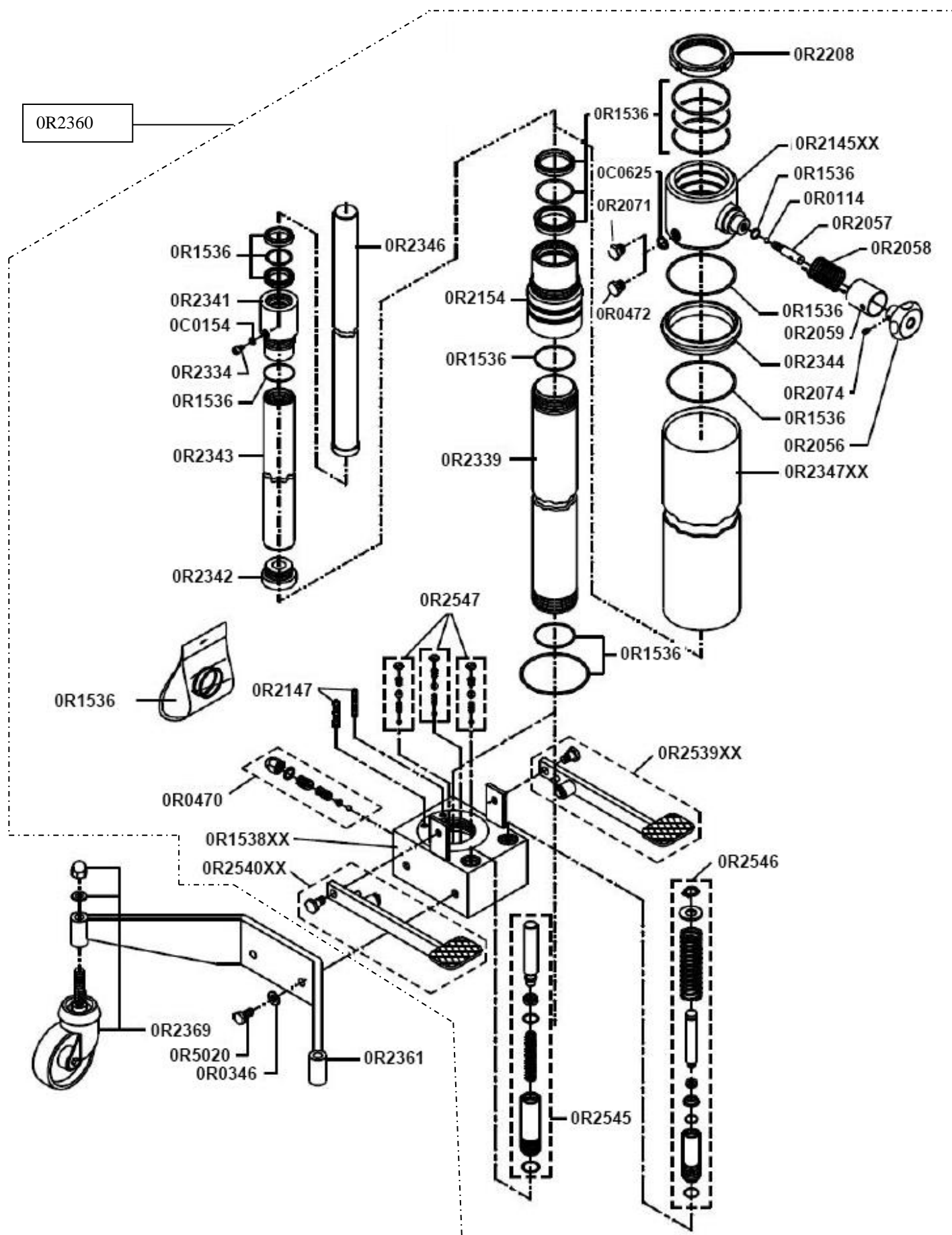
TJ-T1300 G3

2009.10.21 →



| No. | DANSK. | ENGLISH. | DEUTSCH. | FRANÇAIS. |
|----------|-----------------|----------------|---------------------|-------------------|
| 0R2360 | Hydraulikenhed | Hydraulic Unit | Hydraulisch Einheit | Unité hydraulique |
| 2827 | Stilleskrue | Screw | Schraube | Vis |
| 3015 | Løftearm | Lifting arm | Hub arm | Bras de levér |
| <u>A</u> | | | | |
| 003598 | Saddel | Saddle | Sattel | Selle |
| * 000163 | Saddel | Saddle | Sattel | Selle |
| <u>B</u> | | | | |
| 001002LF | Gummi belægning | Gummi f Sattel | Rubber Cover | Selle |
| * 001004 | Gummi belægning | Gummi f Sattel | Rubber Cover | Selle |

* Produceret før 2012.03.01 – Produziert früher als 2012.03.01 – Produced before 2012.03.01 – Produite Avant 2012.03.01



TJ-T1300 G3

| No. | DANSK. | ENGLISH. | DEUTSCH. | FRANÇAIS. |
|----------|----------------------------|----------------------------|-------------------------------------|--|
| 0R2360 | Hydraulikenhed | Hydraulic Unit | Hydraulisch Einheit | Unité hydraulique |
| 0C0154 | Skive ø6.2x10 | Plain washer ø6.2x10 | Flache Unterlegscheibe ø6.2x10 | Rondelle ø6.2x10 |
| 0C0625 | Aluminium skive ø14x18 | Aluminium washer ø14x18 | Alu-Unterlegscheibe ø14x18 | Rondelle in aluminium ø14x18 |
| 0R0114 | Kugle 1/4" | Sphere 1/4" | Kugel 1/4" | Sphere 1/4" |
| 0R0470 | Overtryks ventil kit | Pressure Valve kit | Druck Ventil kit | Modification de valves de pression kit |
| 0R1538XX | Pumpehus | Pump body | Pumpenkörper | Corps de pompe |
| 0R0346 | Skive ø10,5x21 | Plain Washer ø10,5x21 | Flache Unterlegscheibe | Rondelle ø10,5x21 |
| 0R2056 | Udløser håndtag | Release hand wheel | Ablass hand rad | Volant d'échappement |
| 0R2057 | Udløerspindel | Release hand wheel pivot | Zapfen für Ablass hand rad | Tourrion pour volant d'échappement |
| 0R2058 | Returfjeder | Hand wheel return spring | Handradrückholfeder | Ressort de rappel du volant |
| 0R2059 | Hus f. fjeder | Spring cover bush | Federabdeckbuchse | Douille pour couvrir le ressort |
| 0R2071 | Prop M14x1.5 | Blind plug M14x1.5 | Stöpsel M14x1.5 | Bouchon aveugle M14x1.5 |
| 0R2072 | Ventilskrue m. hul M14x1.5 | Vent plug M14x1.5 | Entlüftung Stöpsel mit Loch M14x1.5 | Tête du cylindre |
| 0R2074 | Stift M6x8 12.9 UNI 5923 | Dowel M6x8 12.9 UNI 5923 | Stift M6x8 12.9 UNI 5923 | Grain M6x8 12.9 UNI 5923 |
| 0R2145XX | Cylinderhoved | Cylinder head | Kopf | Tête du cylindre |
| 0R2147 | Oliefilter | Oil filter | Ölfilter | Filtre |
| 0R2154 | Bøsning | Rod guide bush | Schaft führungs- Buchse | Douille pour guider le tige |
| 0R2208 | Omløber | Head locking ring nut | Kopfsperrnutmutter | Frette rête tête |
| 0R2334 | Skrue | Screw | Schraube | Vis |
| 0R2339 | Cylinder | Compression cylinder | Verdichtungszyylinder | Cylindre de compression |
| 0R2341 | Bøsning | Rod guide bush | Schaft führungs- Buchse | Douille pour guider le tige |
| 0R2342 | Prop | Stop ring | Stöpsel | Bouchon |
| 0R2343 | Stempel | Rod | Schaft | Tige |
| 0R2344 | Adapter ring | Adapter ring | Adapter Ring | Anneau de adapter |
| 0R2346 | Stempel | Rod | Schaft | Tige |
| 0R2347XX | Oliebeholder | Oil reservoir | Zylinder Behälter | Cylindre réservoir |
| 0R2361 | Ben | Trolley | Schlitten | Chariot |
| 0R2369 | Drejelig hjul sæt NVCB 80 | NVCB 80 pivoting wheel kit | Set drehbare Räder NVCB 80 | Kit roue tournante NVCB 80 |
| 0R2539XX | Pedal højre | Pedal right | Pedal rechte | Pédale droit |
| 0R2540XX | Pedal venstre | Pedal left | Pedal linke | Pédale gauche |
| 0R2339 | Cylinder | Compression cylinder | Verdichtungszyylinder | Cylindre de compression |
| 0R2545 | Pumpe cylinder kit lavtryk | low pressure cylinder kit | Pumpen Niederdruck -zylinder Satz | cylindre de la pompe à basse pression |
| 0R2546 | Pumpe cylinder kit højtryk | High pressure cylinder kit | Pumpen Hochdruck -zylinder Satz | Pompe à cylindres haute pression |
| 0R2547 | Ventil kit | Valve kit | Ventil Satz | Soupape kit |
| 0R5020 | Skrue TE M10x20 UNI 5739 | Screw TE M10x20 UNI 5739 | Schraube TE M10x20 UNI 5739 | Vis TE M10x20 UNI 5739 |
| 0R1536 | Paknings sæt | Gasket kit | Dichtungssatz | Kit de joints |