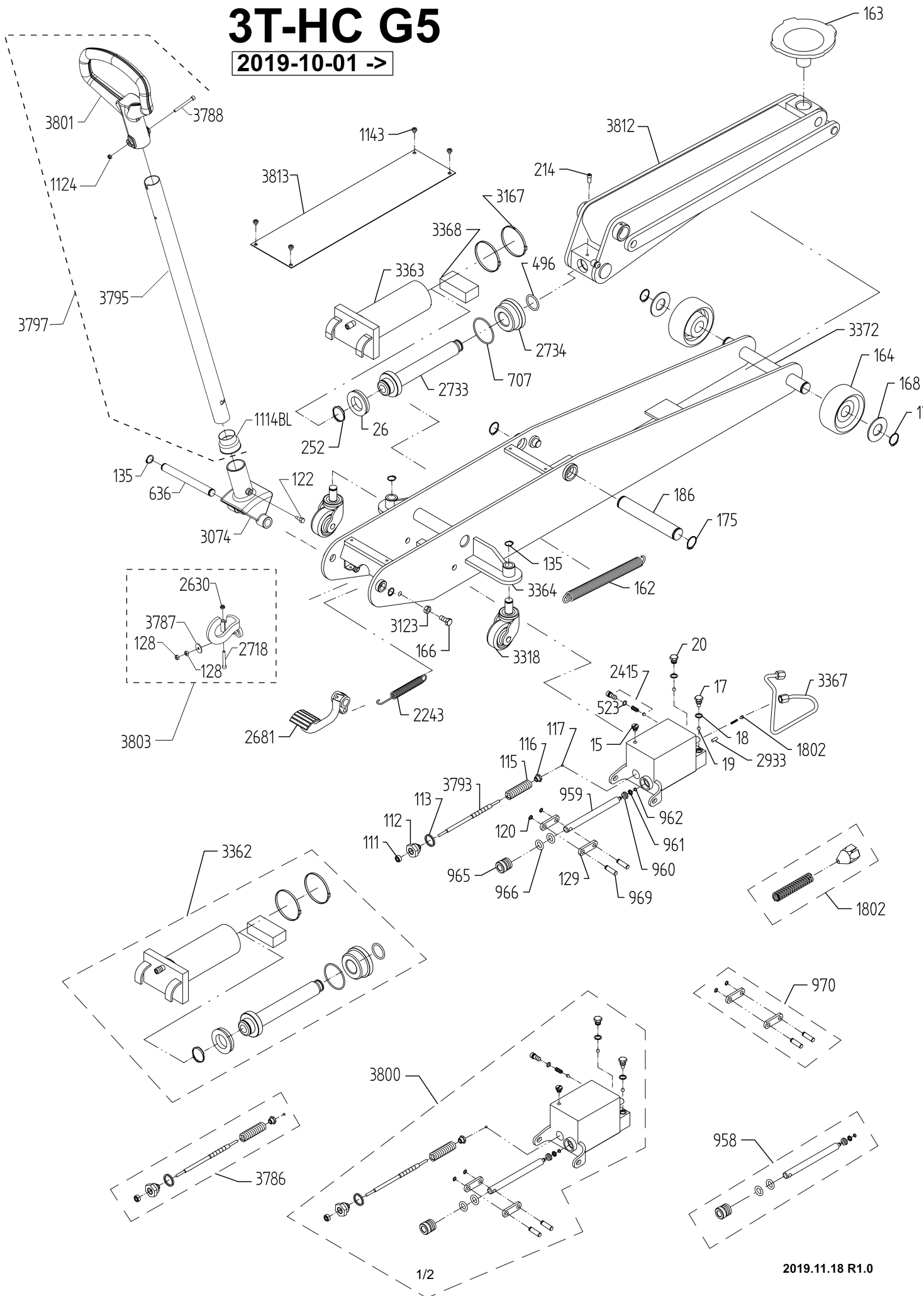


3T-HC G5

2019-10-01 ->



3T-HC G5

| No. | Dansk | Deutsch | English | Français |
|---------------|-------------------------|----------------------------|-----------------------------|--------------------------------|
| *15 | Olieprop | Ölschraube | Oil plug | Bouchon |
| 17 | Ventilprop | Ventilschraube | Valve plug | Vis de clapet |
| *18 | Kobberpakning | Kupferdichtung | Copper washer | Joint cuivre |
| *19 | Ventilkugle, 8 mm | Ventilkugel, 8mm | Valve ball, 8mm | Bille de clapet, 8mm |
| 20 | Ventilprop | Ventilschraube | Valve plug | Vis de clapet |
| *26 | Manchet | Manchette | Sleeve | Bague |
| *111 | Simmerring | Seegering | Simmer ring | Rondelle simmer |
| 112 | Pakdåse | Stopfbuchse | Stuffing box | Ecrou de piston |
| *113 | Pakning | Dichtung | Gasket | Joint |
| 115 | Fjeder | Feder | Spring | Ressort |
| 116 | Møtrik | Mutter | Nut | Ecrou |
| *117 | Kugle ø5 | Kugel | Ball | Bille |
| 120 | Låsering | Sicherungsring | Lock ring | Circlips |
| 122 | Fingerskrue | Rändelschraube | Knurled screw | Vis moletée |
| 128 | Møtrik | Mutter | Nut | Ecrou |
| 129 | Plejlstang | Lashe f.pump.kolb | Connecting rod | Biellette de manoeuvre |
| 135 | Låsering | Sicherungsring | Lock ring | Circlips |
| 162 | Fjeder | Feder | Spring | Ressort |
| 163 | Saddel | Sattel | Saddle | Selle |
| 164 | Hjul | Rad | Wheel | Roue |
| 166 | Skrue | Schraube | Screw | Vis |
| 168 | Skive | Scheibe | Washer | Rondelle |
| 175 | Låsering | Sicherungsring | Lock ring | Circlips |
| 186 | Aksel | Achse | Shaft | Axe |
| 214 | Bolt | Bolzen | Bolt | Boulon |
| 252 | Låsering | Sicherungsring | Lock ring | Circlips |
| *496 | O-ring | O-ring | O ring | Joint torique |
| *523 | O-ring | O-ring | O ring | Joint torique |
| 636 | Aksel | Achse | Shaft | Axe |
| *707 | O-ring | O-ring | O ring | Joint torique |
| 958 | Pumpestempel, kompl. | Pumpenkolben, kompl. | Pump piston, compl. | Piston de pompe, compl. |
| 959 | Pumpestempel, ø16 | Pumpenkolben ø16 | Pump piston ø16 | Piston de pompe ø16 |
| *960 | Manchet | Manschette | Sleeve | Bague |
| *961 | Messingring | Messingring | Brass ring | Rondelle en laiton |
| *962 | Låsering | Sicherungsring | Lock ring | Circlips |
| 965 | Pakdåse | Stopfbuchse | Stuffing box | Ecrou piston |
| *966 | O-ring | O-ring | O ring | Joint torique |
| 970 | Plejlstangssæt | Satz Laschen | Set of conn. rods | Jeu de biellette de man. |
| 1114BL | Manchet | Manschette | Sleeve | Bague |
| 1124 | Møtrik | Mutter | Nut | Ecrou |
| 1143 | Skrue | Schraube | Screw | Vis |
| 1802 | Oliebremse | Senkbremse | Oil valve | Frein d'huile |
| 2243 | Fjeder f. pedal | Feder f. Fußhebel | Spring f. pedal | Ressort pour pédale |
| 2415 | Overtryksventil | Überdruckventil | Excess-pressure valve | Soupape de surpression |
| 2630 | Møtrik | Mutter | Nut | Ecrou |
| 2681 | Pedal | Fußhebel | Pedal | Pédale |
| 2718 | Skrue | Schraube | Screw | Vis |
| 2733 | Stempel | Kolben | Piston | Piston |
| 2734 | Pakdåse | Stopfbuchse | Stuffing box | Ecrou piston |
| 2933 | Stift | Splint | Pin | Cheville |
| 3074 | Kørestangshoved | Fahrstangenkopf | Fork handle | Tête du levier de man. |
| 3123 | Møtrik | Mutter | Nut | Ecrou |
| 3167 | Kabelbinder | Kabelschlingen | Cable straps | Serre-câble |
| 3318 | Drejehjul, kompl. | Schwenkrolle, kompl. | Castor wheel, compl. | Roue pivotante compl. |
| 3362 | Cylinder kompl. | Zylinder, kompl. | Cylinder, compl. | Cylindre compl. |
| 3363 | Cylinder | Zylinder | Cylinder | Cylindre |
| 3364 | Konsol | Lenkrollenausleger | Bracket | Support |
| 3367 | Olierør | Ölrohr | Oil pipe | Conduite d'huile |
| 3368 | Skumpude | Schaumgummi | Foam | Mousse |
| 3372 | Chassis | Chassis | Chassis | Châssis |
| *3505 | O-ring | O-ring | O ring | Joint torique |
| 3507 | Stempel komplet | Kolben kompl. | Piston compl. | Piston compl. |
| 3786 | Returventil, kompl. | Ablåventil, kompl. | Return valve, compl. | Clapet de retour, compl. |
| 3787 | Skive | Scheibe | Disc | Disque |
| 3788 | Skrue | Schraube | Screw | Vis |
| 3793 | Returspindel | Ablåspindel | Return spindle | Pivot de retour |
| 3795 | Kørestang | Fahrstange | Jack handle | Levier de manoeuvre |
| 3797 | Kørestang kompl. | Fahrstange kompl. | Jack handle compl. | Levier de manoeuvre compl |
| 3800 | Pumpe, komplet | Pumpe, komplett | Pump, complete | Pompe compléte |
| 3801 | Håndtag | Handgriff | Handle | Poignée |
| 3803 | Udløser komplet | Ablåarm, komplett | Release arm, complete | Bras de déclenchement compléte |
| 3812 | Løftearm | Hubarm | Lifting arm | Levier de levage |
| 3813 | Dæklade | Schutzblech | Cover | Plaque de protection |
| 060013 | Pakningssæt | Dichtungssatz | Repair kit | Jeu de réparation |
| * | Indeholdt i pakningssæt | Im Dichtungssatz enthalten | Contained in the repair-kit | Contenu dans le jeu de joint |